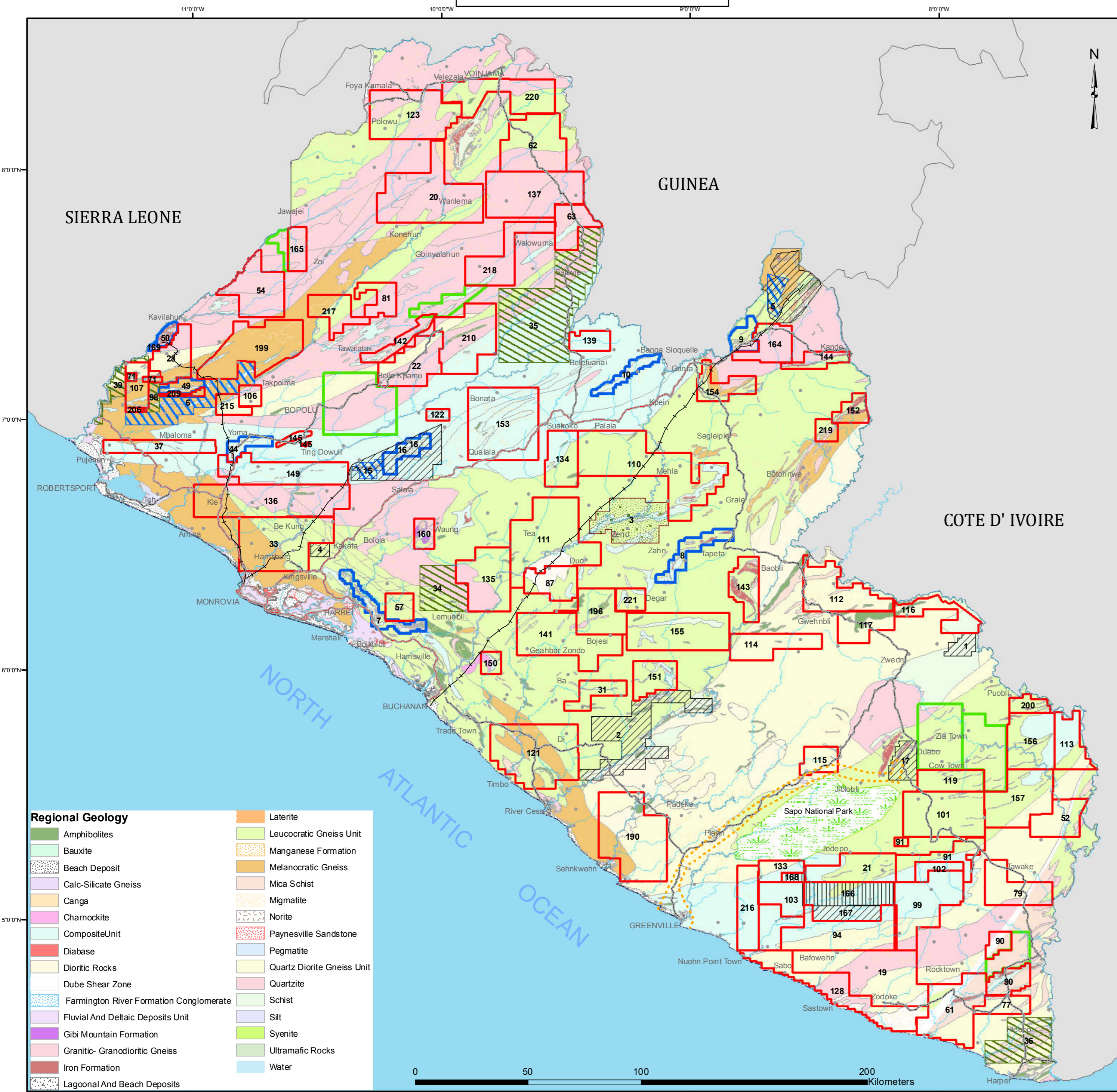




MINISTRY OF LANDS, MINES & ENERGY
REPUBLIC OF LIBERIA
MINERAL PROPERTY MAP



- Legend**
- Town/City
 - Railway
 - Primary, Unpaved Road
 - Primary, paved Road
 - PIOM Rail Corridor
 - Sapo National Park (Protected Area)
 - Proposed Production Area
 - Mineral Reconnaissance License (MRL)
 - Mineral Exploration License (MEL)
 - Mineral Development Agreement (MDA)
 - Development Exploration License (DEL)
 - Approved Application
 - Mining License (Class A)
 - Mineral Exploration Agreement (MEA)

- Regional Geology**
- Amphibolites
 - Bauxite
 - Beach Deposit
 - Calc-Silicate Gneiss
 - Canga
 - Charnockite
 - Composite Unit
 - Diabase
 - Dioritic Rocks
 - Dube Shear Zone
 - Farmington River Formation Conglomerate
 - Fluvial And Deltaic Deposits Unit
 - Gibi Mountain Formation
 - Granitic- Granodioritic Gneiss
 - Iron Formation
 - Lagoonal And Beach Deposits
 - Laterite
 - Leucocratic Gneiss Unit
 - Manganese Formation
 - Melanocratic Gneiss
 - Mica Schist
 - Migmatite
 - Norite
 - Paynesville Sandstone
 - Pegmatite
 - Quartzite
 - Schist
 - Silt
 - Syenite
 - Ultramafic Rocks
 - Water

COMPANY LISTING AND TITLES						
No.	License Code	License Holders	Map Code	License Type	Effective Date	Commodity
1	MEL 12022	Acuarian Commercial Holdings Inc.	63	MEL	9/5/2011	Iron Ore
2	MEL 11096	Aforo Resources Liberia Ltd.	21	MEL	12/13/2012	Gold & Other Minerals
3	MEL 11097	Aforo Resources Liberia Ltd.	20	MEL	12/13/2012	Gold & Other Minerals
4	MEL 11061	African Gold Mining Lib. Ltd.	110	MEL	4/4/2011	Gold & Base Metals
5	MEL 11062	African Gold Mining Lib. Ltd.	111	MEL	4/4/2011	Gold & Base Metals
6		AMLIB United Minerals Inc. - Cestos	2	MDA	9/17/2010	Gold
7		AMLIB United Minerals Inc. - Khele	4	MDA	9/17/2010	Gold
8	Proposed Production Area	AMLIB United Minerals Inc. - Kokoya	3	To Be Approved		
9		AMLIB United Minerals Inc. - Zwedru	1	MDA	9/17/2010	Gold
10		Arcebor Mital	5	Class A	8/17/2005	Iron Ore
11	MEL 11054	Archean Gold Liberia Inc.	106	MEL	12/29/2010	Gold
12	MEL 11103	Archean Gold Liberia Inc.	215	MEL	11/4/2013	Gold
13	MEL 12029	B. S. D. Inc.	200	MEL	11/15/2013	Iron Ore
14	MEL 12005	BAO CHCO Resources Liberia Ltd.	145	MEL	4/27/2013	Iron Ore
15	MEL 11090	BCM International Liberia Ltd.	139	MEL	10/22/2011	Gold & Base Metals
16	MEL 11098	BCM International Liberia Ltd.	22	MEL	12/13/2012	Gold & Base Metals
17		Bea Mountain Corp.	6	Class A	7/29/2009	Gold
18	MEL 1680/13	Bea Mountain Corp.	199	MEL	11/4/2013	Gold
19	MEL 11104	Bea Mountain Corp.	206	MEL	11/4/2013	Gold
20	MEL 11104	Bea Mountain Corp.	209	MEL	11/4/2013	Gold
21	MEL 11087	BC Minerals Lib. Ltd.	136	MEL	11/19/2011	Gold
22	DEL 14001-170	BHP Billiton Liberia Inc.	8	MDA	7/16/2010	Iron Ore
23	DEL 14002-45	BHP Billiton Liberia Inc.	7	MDA	7/16/2010	Iron Ore
24	DEL 14003-46	BHP Billiton Liberia Inc.	9	MDA	7/16/2010	Iron Ore
25	DEL 14004-47	BHP Billiton Liberia Inc.	10	MDA	9/16/2010	Iron Ore
26	MEL 12027	BHP Billiton Liberia Inc.	164	MEL	1/3/2012	Iron Ore
27	MEL 11100	Birman Gold Ltd.	19	MEL	1/23/2013	Gold
28	MEL 11084	Bogaha Commercial Ltd.	133	MEL	11/4/2011	Gold & Base Metals
29		Bukon Jedeh Resources Inc.	167	MDA	5/23/1978	Gold
30	MEL 11038	Bukon Jedeh Resources Inc.	91	MEL	1/11/2010	Gold & Diamond
31	MEL 11037	Bukon Jedeh Resources Inc.	90	MEL	1/11/2010	Gold & Diamond
32	DEL 14005-175	China Union (Hong Kong) Mining Co.	15	Class A	9/13/2011	Iron Ore
33	DEL 14006-48	China Union (Hong Kong) Mining Co.	16	MDA	7/14/2011	Iron Ore
34	MEL 11095	GEMROCKS Mining Resources Inc.	33	MEL	12/13/2012	Gold
35	MEL 11110	GEMROCKS Mining Resources Inc.	218	MEL	11/15/2013	Gold & Base Metals
36	MEL 11106	GEMROCKS Mining Resources Inc.	217	MEL	11/15/2013	Gold & Diamonds
37		Hummingbird Resources Inc.	168	MEA	5/23/1978	Gold
38		Hummingbird Resources Inc.	166	MEA	5/23/1978	Gold
39	MEL 11013	Hummingbird Resources Inc.	52	MEL	8/11/2008	Gold & Base Metals
40	MEL 11029	Hummingbird Resources Inc.	77	MEL	11/28/2008	Gold & Base Metals
41	MEL 11022	Hummingbird Resources Inc.	79	MEL	11/28/2008	Gold & Base Metals
42	MEL 11051	Hummingbird Resources Inc.	103	MEL	7/10/2010	Gold & Base Metals
43	MEL 11041	Hummingbird Resources Inc.	94	MEL	1/25/2010	Gold & Base Metals
44	MEL 12003	Iron Resources Ltd.	143	MEL	7/21/2009	Iron Ore
45	MEL 12004	IRONBIRD Resources	144	MEL	11/8/2008	Iron Ore
46	MEL 12015	Jonah Capital (BYI) Liberia Ltd.	152	MEL	7/14/2011	Iron Ore
47	MEL 12016	Jonah Capital (BYI) Liberia Ltd.	153	MEL	7/14/2011	Iron Ore
48	MEL 12017	Jonah Capital (BYI) Liberia Ltd.	154	MEL	7/14/2011	Iron Ore
49	MEL 12018	Jonah Capital (BYI) Liberia Ltd.	155	MEL	7/14/2011	Iron Ore
50	MEL 12019	Jonah Capital (BYI) Liberia Ltd.	156	MEL	7/14/2011	Iron Ore
51	MEL 12020	Jonah Capital (BYI) Liberia Ltd.	157	MEL	7/14/2011	Iron Ore
52	MEL 11085	Knights Group Inc.	134	MEL	11/15/2011	Gold
53	MEL 11086	Knights Group Inc.	135	MEL	11/15/2011	Gold
54	MEL 11088	Louis D'Or	137	MEL	11/23/2011	Gold & Diamond
55	MEL 11075	Louis D'Or	123	MEL	7/20/2011	Gold & Diamond
56	MEL 11094	Liberia Development Inesitatives	196	MDA	2/13/2012	Gold & Base Metals
57	MEL 11066	Middle Island Resources Liberia Ltd.	114	MEL	4/16/2011	Gold
58	MEL 11067	Middle Island Resources Liberia Ltd.	115	MEL	4/15/2011	Gold, Diamond, Others Except Iron Ore
59	MEL 11068	Middle Island Resources Liberia Ltd.	116	MEL	4/15/2011	Gold, Diamond, Others Except Iron Ore
60	MEL 11049	Middle Island Resources Liberia Ltd.	117	MEL	4/15/2011	Gold, Diamond, Others Except Iron Ore
61	MEL 11108	Mining & Exploration Services Liberia Ltd.	210	MEL	11/4/2013	Gold
62	MEL 13026	MONNET Global Liberia Ltd.	34	MRL	1/30/2014	Iron Ore & Other Allied Minerals
63	MEL 13027	MONNET Global Liberia Ltd.	35	MRL	1/30/2014	Iron Ore
64	MEL 13028	MONNET Global Liberia Ltd.	36	MRL	1/30/2014	Iron Ore
65	MEL 12028	NIMBA RESOURCES LIMITED	219	MEL	1/30/2014	Iron Ore
66	MEL 11091	Noya Mining Ltd.	62	MEL	1/3/2012	Gold & Diamond
67	MEL 11093	Noya Mining Ltd.	141	MEL	2/6/2012	Gold & Diamond
68	MEL 11055	PEDSAM Mining Corp.	107	MEL	1/19/2011	Gold & Base Metals
69	MEL 11032	PEDSAM Mining Corp.	87	MEL	9/25/2009	Gold & Base Metals
70	MEL 11024	PEDSAM Mining Corporation	81	MEL	4/10/2013	Gold, Diamond & Base Metals
71	MEL 11049	Planet Minerals Ltd.	101	MEL	9/29/2011	Gold & Base Metals
72	MEL 11050	Planet Minerals Ltd.	102	MEL	9/29/2011	Gold & Base Metals
73	MEL 11102	Planet Minerals Ltd.	28	MEL	3/21/2013	Gold & Diamond
74		Putu Iron Ore Mining Inc.	17	MDA	9/17/2010	Iron Ore
75	MEL 2396/14	SALMEK Resources Ltd.	142	MEL	2/25/2014	Gold & Iron Ore
76	MEL 13035	Sarama Mining Liberia Ltd.	98	MEL	9/19/2014	Gold & Base Metals
77	MEL 13031	Sarama Mining Liberia Ltd.	39	MRL	10/26/2011	Gold & Base Metals
78	MEL 11047	Sinoe Exploration Ltd.	99	MEL	7/21/2010	Gold & Base Metals
79	MEL 11080	Sinoe Mining & Exploration Inc.	128	MEL	8/2/2011	Gold
80	MEL 2359/14	SINO-LIB INTERNATIONAL COMPANY	220	MEL	2/10/2014	Gold
81	MEL 11072	Solomon Resources Corporation	121	MEL	6/29/2011	Gold & Base Metals
82	MEL 12014	Southern Cross International Ltd.	151	MEL	5/6/2011	Iron Ore
83	MEL 11063	Superior Minerals Resources Inc.	112	MEL	4/19/2011	Gold, Diamond & Other Minerals except Iron Ore
84	MEL 11109	TASIS International Ltd.	216	MEL	11/4/2013	Iron Ore
85	MEL 12029	TAWANA Liberia Inc.	37	MEL	12/13/2012	Iron Ore
86	MEL 11065	Thackett Mining Inc.	113	MEL	4/14/2011	Gold
87	MEL 11070	Thackett Mining Inc.	119	MEL	6/23/2011	Gold
88	MEL 12021	Tieto Minerals Liberia Ltd.	61	MEL	10/23/2011	Iron Ore, Gold & Base Metals
89	MEL 11036	Treco Mining Co.	165	MEL	4/1/2010	Diamond
90	MEL 2347/14	W.D.L. Corporation	71	MEL	2/7/2014	Iron Ore
91	MEL 11057	West African Resources Ltd.	57	MEL	1/24/2011	Gold
92	MEL 11058	West African Resources Ltd.	190	MEL	1/24/2011	Gold
93	MEL 2346/14	West Peak Iron Ltd.	221*	MEL	2/25/2014	Iron Ore
94	MEL 12012	West Peak Iron Ltd.	149	MEL	4/14/2011	Iron Ore
95	MEL 12013	West Peak Iron Ltd.	150	MEL	4/14/2011	Iron Ore
96	MEL 11101	West Peak Iron Ltd.	31	MEL	2/27/2013	Iron Ore
97	DEL 14007	Western Cluster Ltd.	44	DEL	11/30/2011	Iron Ore
98	DEL 14008	Western Cluster Ltd.	49	DEL	11/30/2011	Iron Ore
99	DEL 14009	Western Cluster Ltd.	50	DEL	11/30/2011	Iron Ore
100	DEL 14010	Western Cluster Ltd.	169	DEL	11/30/2011	Iron Ore
101	MEL 11073	WINSTOCK Development Liberia Corp.	122	MEL	6/29/2011	Iron Ore
102	MEL 12023	WINSTOCK Development Liberia Corp.	160	MEL	10/13/2011	Iron Ore & Barite
103	MEL 11035	Youssef Diamond Mining Co.	54	MEL	4/1/2010	Diamond

Projection: Transverse Mercator
 Datum: WGS 84
 Date: February 27, 2014

Disclaimer:
 Mineral Properties presented on this map do not include mineral rights of the alluvial sector(Class 'C' and Class 'B').
 This map will be periodically updated to depict active and new licenses.

Data Source:
 Mining Cadastre Information Management System (MCIMS)
 United States Geological Survey & Liberian Geological Survey (USGS & LGS)

Map Reference: MPM000000014MCMU
 Prepared by: Mining Cadastre Information Management Unit (MCI MU)
 Ministry of Lands, Mines & Energy
 Republic of Liberia